

Lafayette College

STARS Assessment

EGRS 480 - Sustainable Solutions



Katie Geraghty, Drew Beyer, Hannah Goldstein,
Joe Ingrao, Chris Nelsen, and Katy Rooney

Agenda

STARS Background

Methods, Successes, and Shortcomings

Predicted Score

Evaluation and Action Items

Conclusions



The Association for the Advancement
of Sustainability in Higher Education

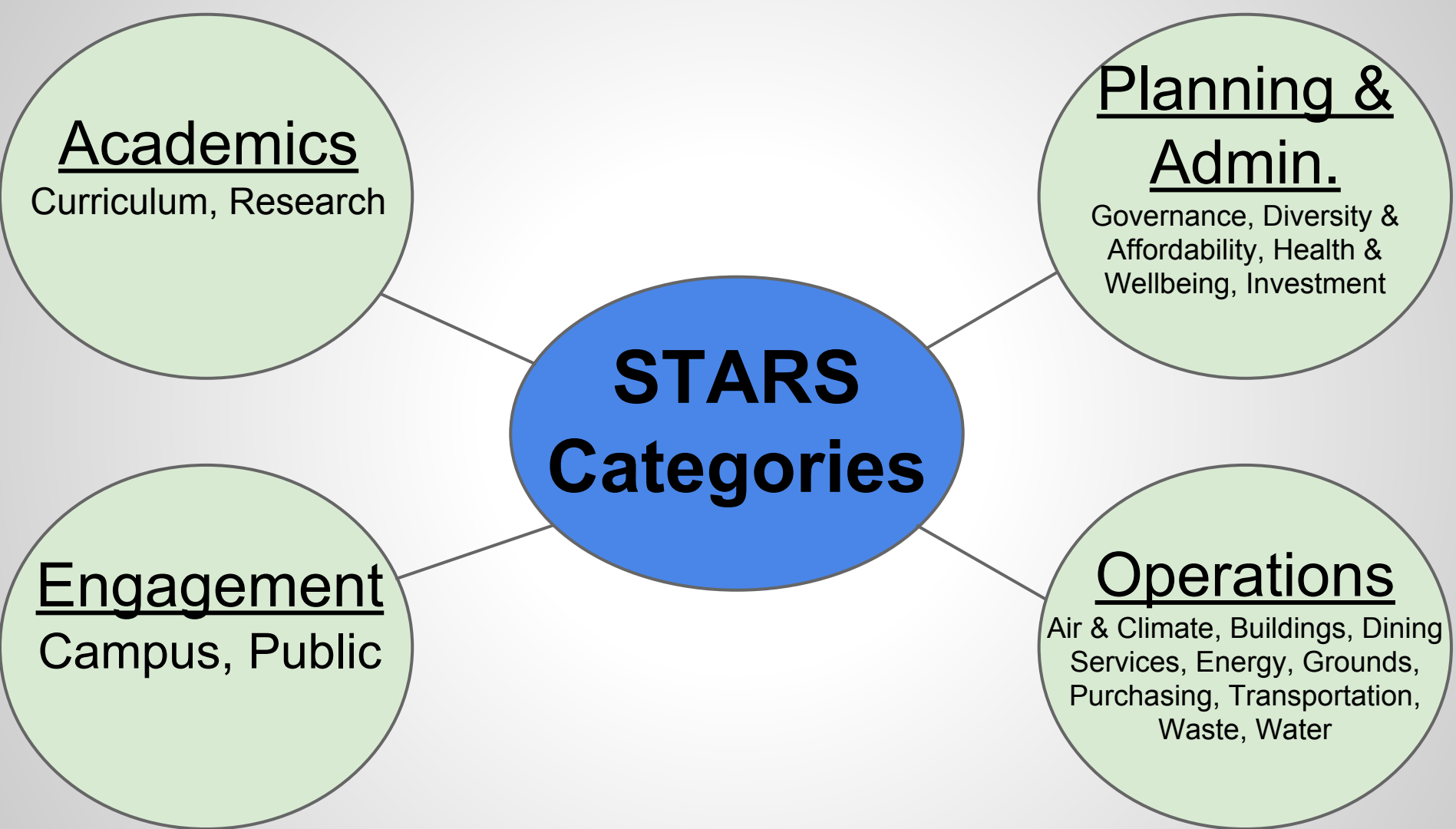
AASHE - STARS



Association for the Advancement of Sustainability in Higher
Education

The Sustainability Tracking, Assessment & Rating System





Academics

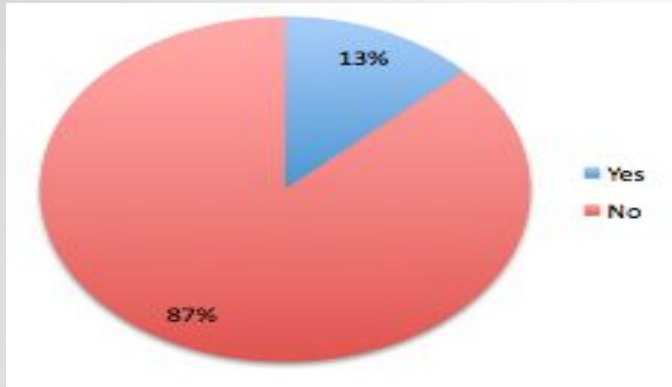


Academics

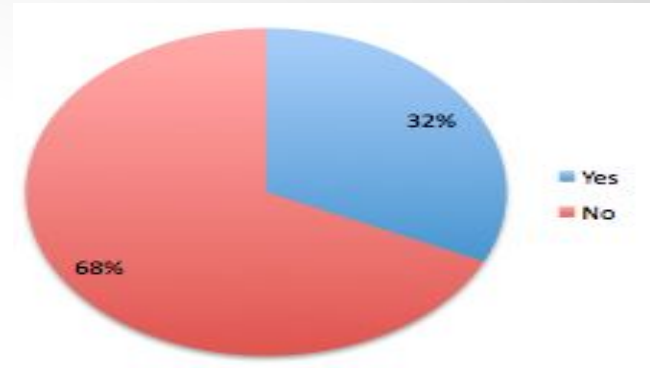
Successes and Shortcomings

Credit	Available Points	Expected Points
AC-1: Academic Courses	14.0	7.14
AC-2: Learning Outcomes	8.0	1.83
AC-3: Undergraduate Program	3.0	3.0
AC-4: Graduate Program	0.0	0.0 (NA)
AC-5: Immersive Experience	2.0	2.0
AC-6: Sustainability Literacy Assessment	4.0	2.0
AC-7: Incentives for Developing Courses	2.0	0 (NP)
AC-8: Campus as a Living Laboratory	4.0	4.0

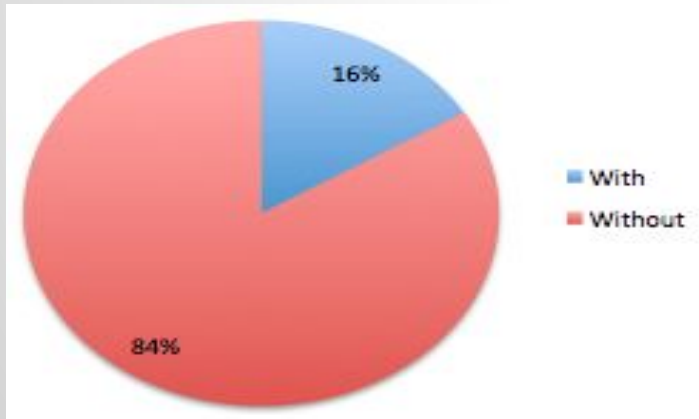
Have you taught a class since Fall 2012 that is sustainability focused?



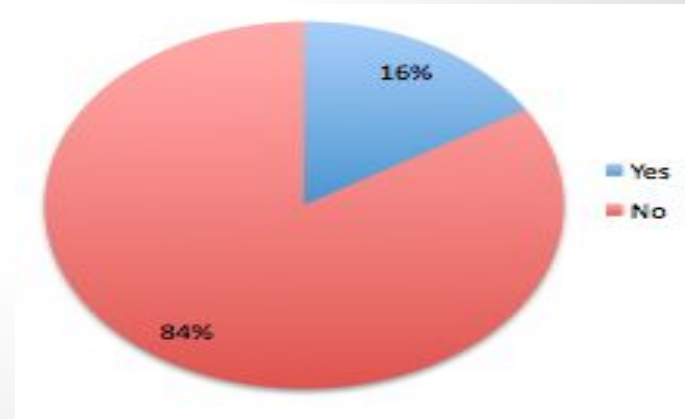
Have you taught a class since Fall 2012 that includes sustainability?



Departments with Sustainability Learning Outcomes



Have you conducted sustainability research since Fall 2012?



Academics

Successes and Shortcomings

Credit	Available Points	Expected Points
AC-9: Academic Research	12.0	8.59
AC-10: Support for Research	4.0	2.0
AC-11: Access to Research	2.0	0.0 (NP)
Total	55.0	30.56

Academics

Predicted Score

Category	Points Available	Points Expected	Percentage
Academics	55	30.56	56%

Engagement



Engagement

Successes and Shortcomings

Credit	Available Points	Expected Points
EN-1: Student Education	4	3.8
EN-2: Student Orientation	2	2
EN-3: Student Life	2	2
EN-4: Outreach Materials and Publication	2	2
EN-5: Outreach Campaign	4	4
EN-6: Employee Educators Program	3	0
EN-7: Employee Orientation	1	1
EN-8: Staff Professional Development	2	0

Engagement

Successes and Shortcomings

Credit	Available Points	Expected Points
EN-9: Community Partnership	3	3
EN-10: Inter-Campus Collaboration	2	2
EN-11: Continuing Education	5	0
EN-12:Community Services	5	1.54
EN-13: Community Stakeholder Engagement	2	2
EN-14:Participation in Public Policy	2	0
EN-15: Trademark Licensing	2	0
EN-16: Hospital Network	0	0
Total	41	23.34

Engagement

Predicted Score

Category	Points Available	Points Expected	Percentage
Engagement	41	23.34	57%

Operations



Operations

Successes and Shortcomings

Credit	Available Points	Expected Points
OP-1: Greenhouse Gas Emissions	10	5.02
OP-2: Outdoor Air Quality	1	0 (NP)
OP-3: Building Operations and Maintenance	4	0 (NP)
OP-4: Building Design and Construction	3	1.27
OP-5: Indoor Air Quality	1	0 (NP)
OP-6: Food and Beverage Purchasing	4	1
OP-7: Low Impact Dining	3	2.07

Operations

Successes and Shortcomings

Credit	Available Points	Expected Points
OP-8: Building Energy Consumption	6	3.25
OP-9: Clean and Renewable Energy	4	0 (NP)
OP-10: Landscape Management	2	0 (NP)
OP-11: Biodiversity	1	0 (NP)
OP-12: Electronics Purchasing	1	0.74
OP-13: Cleaning Products Purchasing	1	0 (NP)
OP-14: Office Paper Purchasing*	1	0 (NP)

Operations

Successes and Shortcomings

Credit	Available Points	Expected Points
OP-15: Inclusive and Local Purchasing	1	0 (NP)
OP-16: Life Cycle Cost Analysis	1	0 (NP)
OP-17: Guidelines for Business Partners	1	0.5
OP-18: Campus Fleet	1	0.02
OP-19: Student Commute Modal Split	2	1.93
OP-20: Employee Commute Modal Split	2	0.77
OP-21: Support for Sustainable Transport	2	0.5

Operations

Successes and Shortcomings

Credit	Available Points	Expected Points
OP-22: Waste Minimization	5	0.83
OP-23: Waste Diversion	3	0.26
OP-24: Construction Waste Diversion	1	0 (NP)
OP-25: Hazardous Waste Management	1	1
OP-26: Water Use	6	0
OP-27: Rainwater Management	2	0 (NP)
OP-28: Wastewater Management	1	0 (NP)
Total	69	19.16

Operations

Predicted Score

Category	Points Available	Points Expected	Percentage
Operations	69	19.16	27.8%

Planning & Administration



LAFAYETTE
COLLEGE



Planning & Administration

Successes and Shortcomings

Credit	Available Points	Expected Points
PA 1: Sustainability Coordination	1	1
PA 2: Sustainability Planning	4	3.5
PA 3: Governance	3	2
PA 4: Diversity and Equity Coordination	2	1.25
PA 5: Assessing Diversity and Equity	1	0.75
PA 6: Support for Underrepresented Groups	2	2
PA 7: Support for Future Faculty Diversity	1	1
PA 8: Affordability and Access	4	3.65

Planning & Administration

Successes and Shortcomings

Credit	Available Points	Expected Points
PA 9: Employee Compensation	3	2.75
PA 10: Assessing Employee Satisfaction	1	0.63
PA 11: Wellness Program	1	1
PA 12: Workplace Health and Safety	2	0.23
PA 13: Committee on Investor Responsibility	2	0
PA 14: Sustainable Investment	4	0
PA 15: Investment Disclosure	1	1
Total	32	20.76

Planning & Administration

Predicted Score

Category	Points Available	Points Expected	Percentage
Planning & Administration	32	20.76	65%

Predicted Rating



Predicted Rating

Category	Points Available	Points Expected	Percentage
Academics	55	30.56	55.6%
Engagement	41	23.34	56.9%
Operations	69	19.16	27.8%
Planning & Admin.	32	20.76	64.9%
Total	197	93.82	47.6%

Bronze	Silver	Gold	Platinum
25-44%	45-64%	65-84%	85-100%

Evaluation and Action Items

Action	Economic Feasibility*	Administrative Feasibility	Social Feasibility	Climate Action Plan Progress	Campus Master Plan Progress	Educational Opportunity	Campus Life Experience	STARS Points Opportunity
High	Effectively no cost	Little resistance, available staff and resources	Existing momentum, high interest level, and campus unity (or no behavior change necessary)	Mentioned, Significant Benefit	Mentioned, Significant Benefit	Increased opportunity for active, large scale learning about sustainability	Improves well-being of students, faculty, employees	Points Available
Medium	Minor impact	Some resistance, available staff or resources	Either some momentum or little to no required behavior change	Mentioned, marginal/no benefit	Mentioned, marginal/no benefit	Passive, small scale learning	Marginal or ambiguous benefits	Points Available
Low	Major impact	Strong resistance, no available staff or resources	No momentum or active resistance to change	Not mentioned or not related	Not mentioned or not related	None	No or adverse well-being impacts	Points Available

*According to one of the following metrics: payback period, % price increase, funding availability, salary

Create New Sustainability Course Offerings

- Offer More Sustainability Courses: 6.8 points
 - Set Up an Incentive Program: 2 points

STARS Points Opportunity	Economic Feasibility	Administrative Feasibility	Social Feasibility	Climate Action Plan Effect	Campus Master Plan Effect	Educational Opportunity	Campus Life Experience
6.8	2	2	3	3	1	3	2

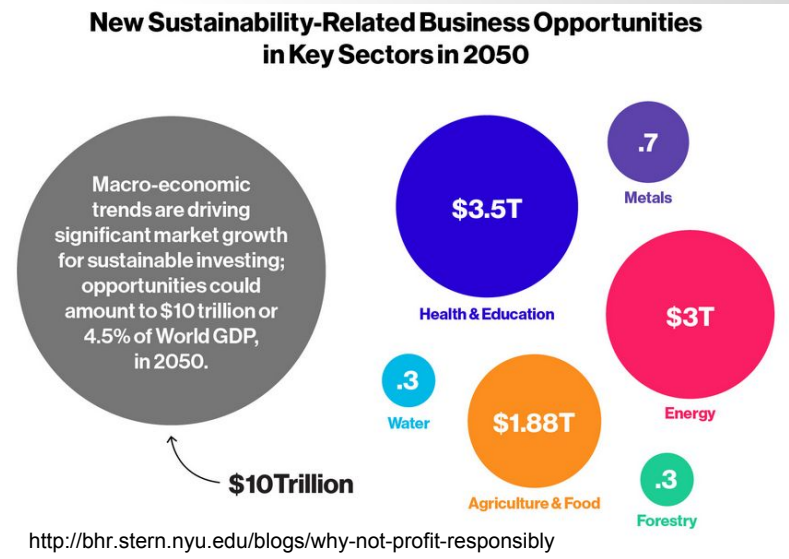
Create More Staff and Faculty Professional Development Opportunities

- Offer a Peer to Peer Staff Educators Program: 3 points
- Offer More Staff Professional Development Opportunities: 2 points

STARS Points Opportunity	Economic Feasibility	Administrative Feasibility	Social Feasibility	Climate Action Plan Effect	Campus Master Plan Effect	Educational Opportunity	Campus Life Experience
5	2	2	1	1	1	3	2

Engage in Investment Strategies with Companies that Follow Sustainable Practices

- Potential: 4 point improvement on AASHE STARS Assessment
- ESG vs. SRI



STARS Points Opportunity	Economic Feasibility	Administrative Feasibility	Social Feasibility	Climate Action Plan Effect	Campus Master Plan Effect	Educational Opportunity	Campus Life Experience
5	1	2	2	3	1	2	2

Hire a Sustainability Officer

Centralize

Bring everything together

Coordinate

Align goals, plan strategies, execute initiatives

Communicate

Serve as the hub of all sustainable information

STARS Points Opportunity	Economic Feasibility	Administrative Feasibility	Social Feasibility	Climate Action Plan Effect	Campus Master Plan Effect	Educational Opportunity	Campus Life Experience
0*	2	2	3	1	1	3	2

Conclusions



Thank you for your support!