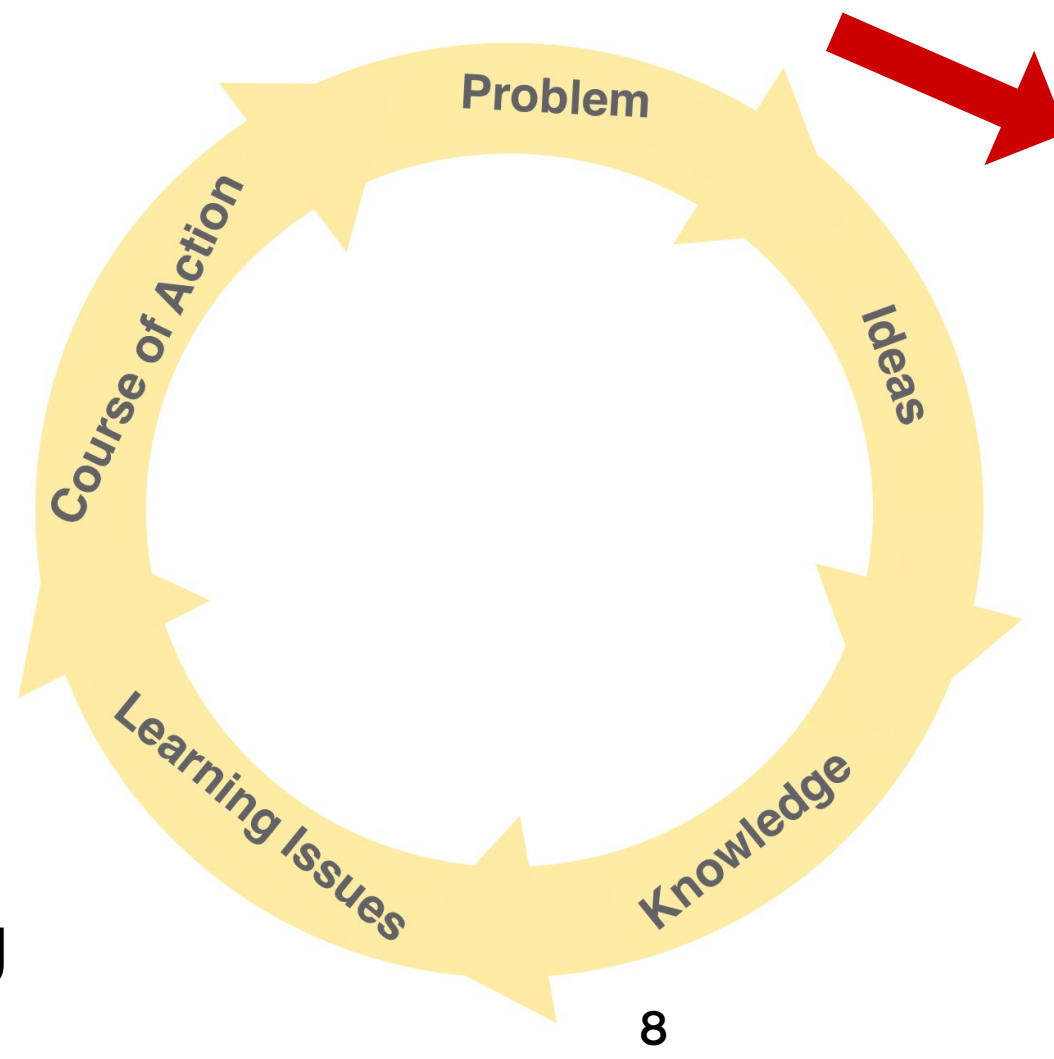


NM Waters, V Hoyt, P Ratsimbazafy, A Halpin Ortiz, C McCauley

Call to Action:
Invitation to solicit college leadership on sustainable practice in the Spring of 2014.



Supposition and Question:
Has Lafayette College done an admirable job in reducing its carbon footprint?



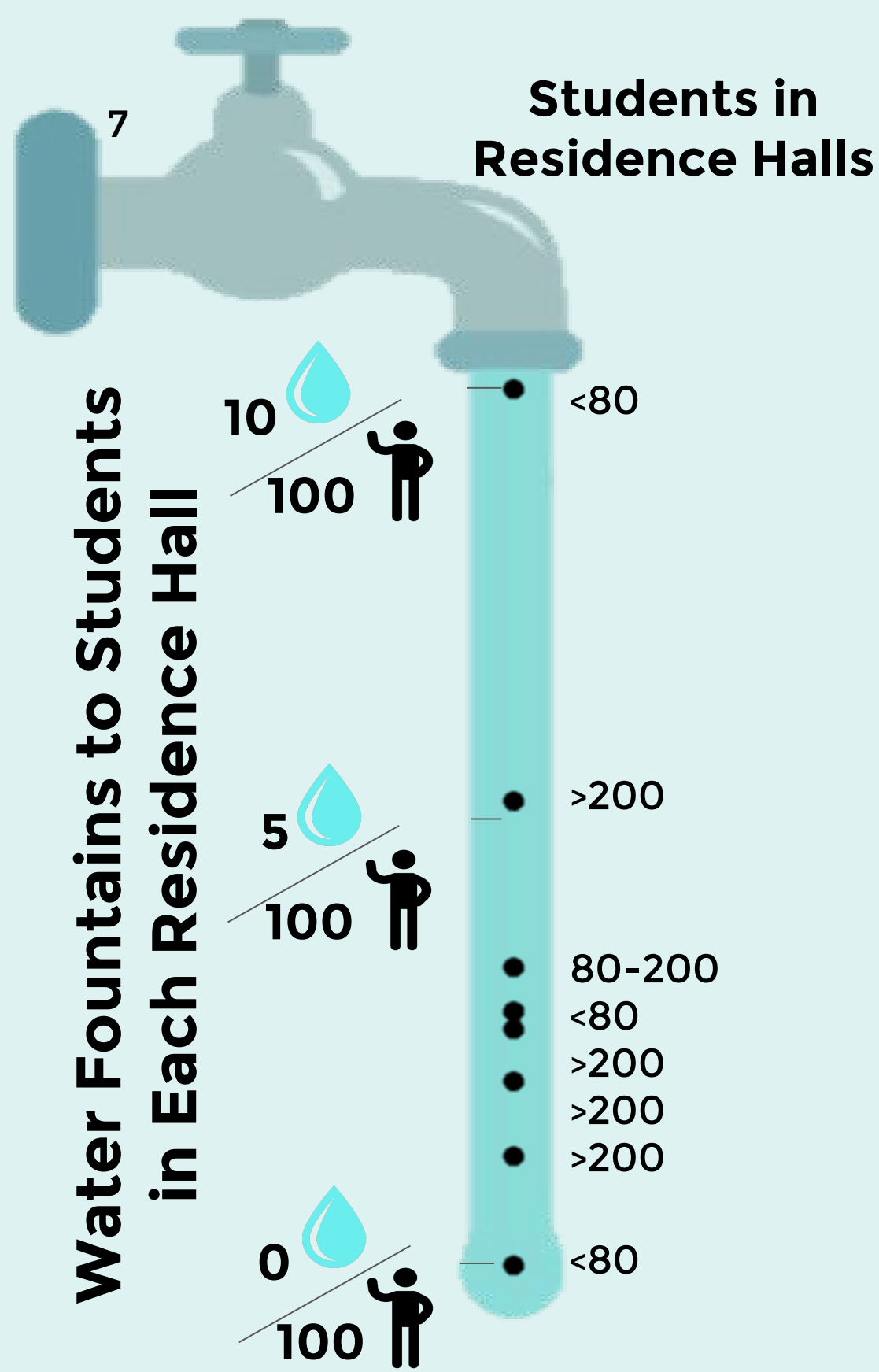
Response: Students in BIOL234: EnViBi undertake a Problem-Based Learning Unit to address the Question.



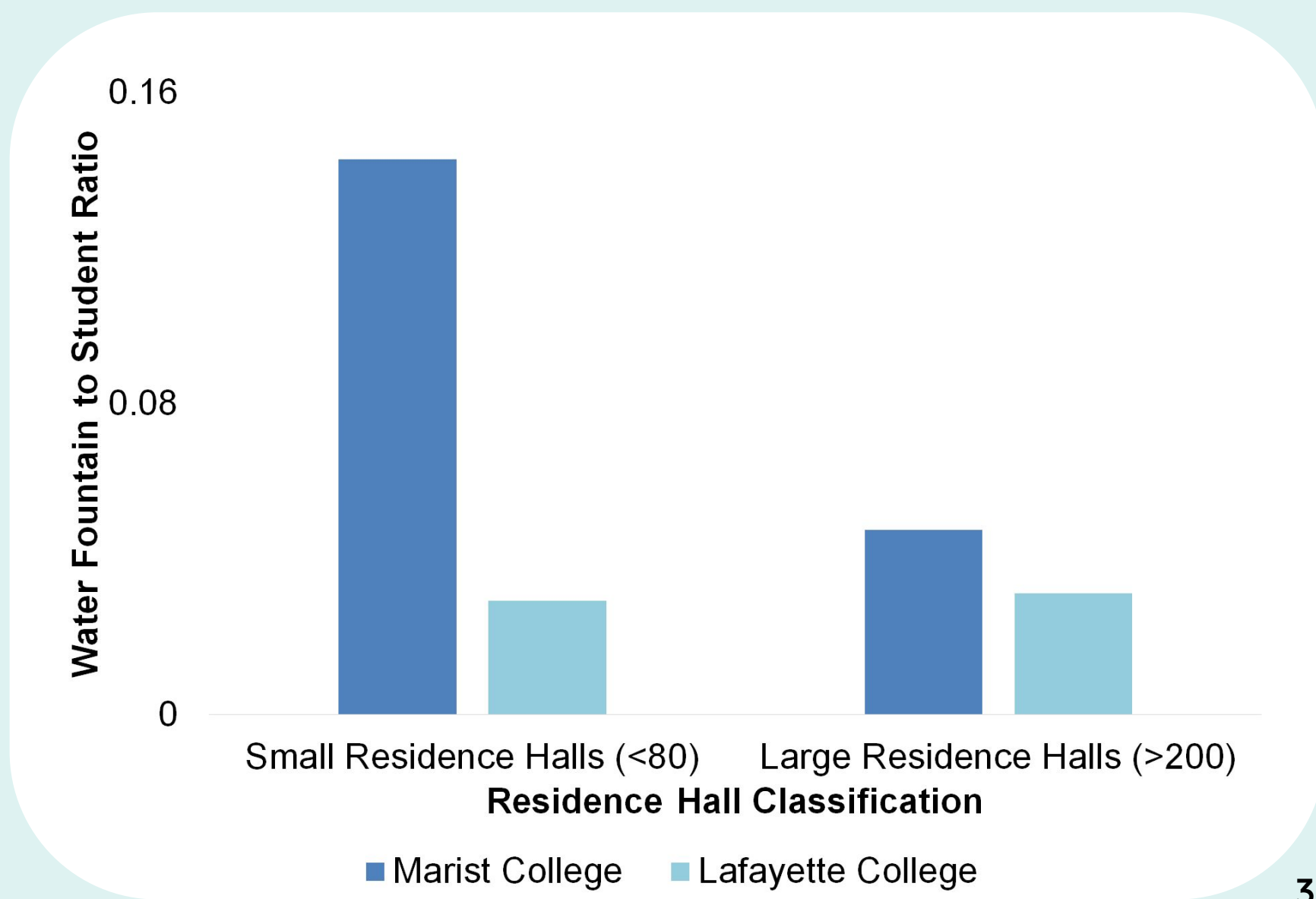
Task: Assess value of sustainability to Lafayette College community; Identify knowledge, attitudes, beliefs, and behaviors.

Water Fountains

The Problem: There is an inequitable distribution of water dispensers capable of promoting sustainable use across campus.

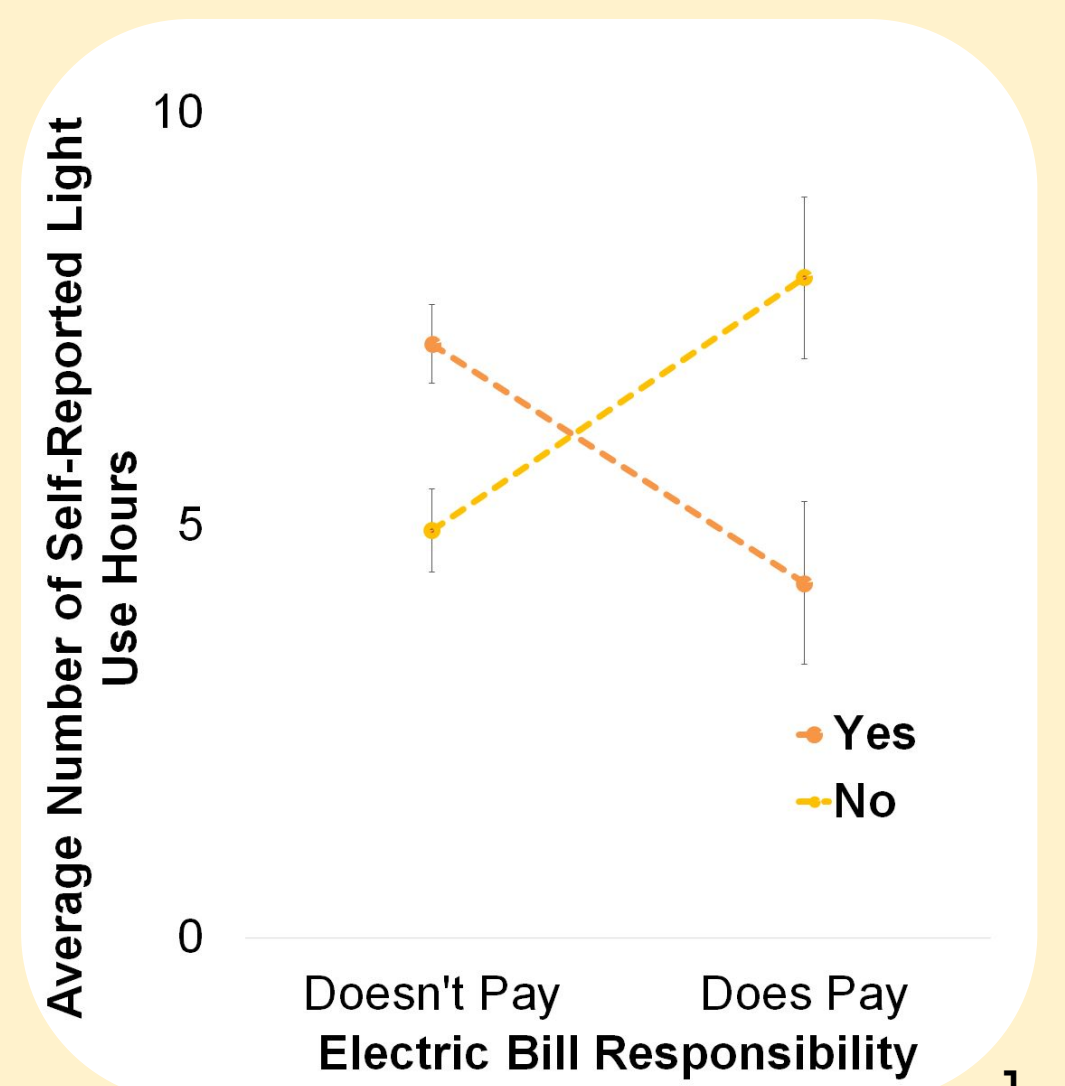
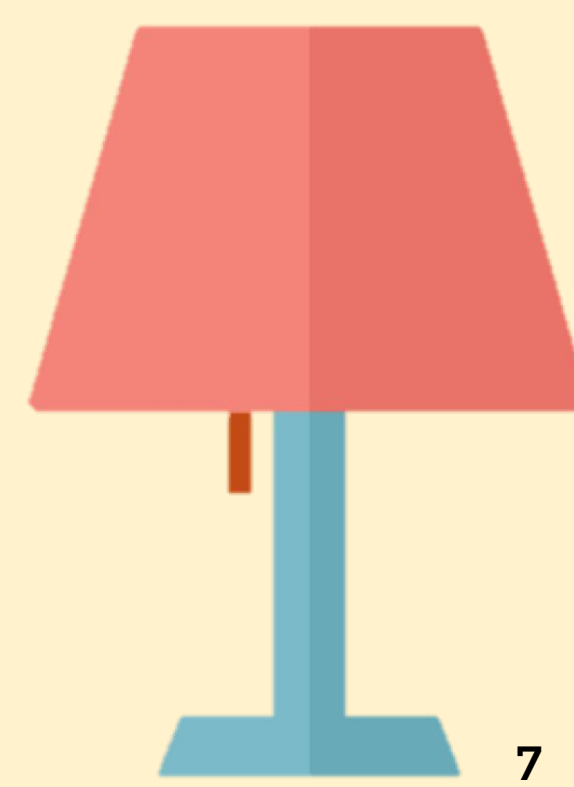
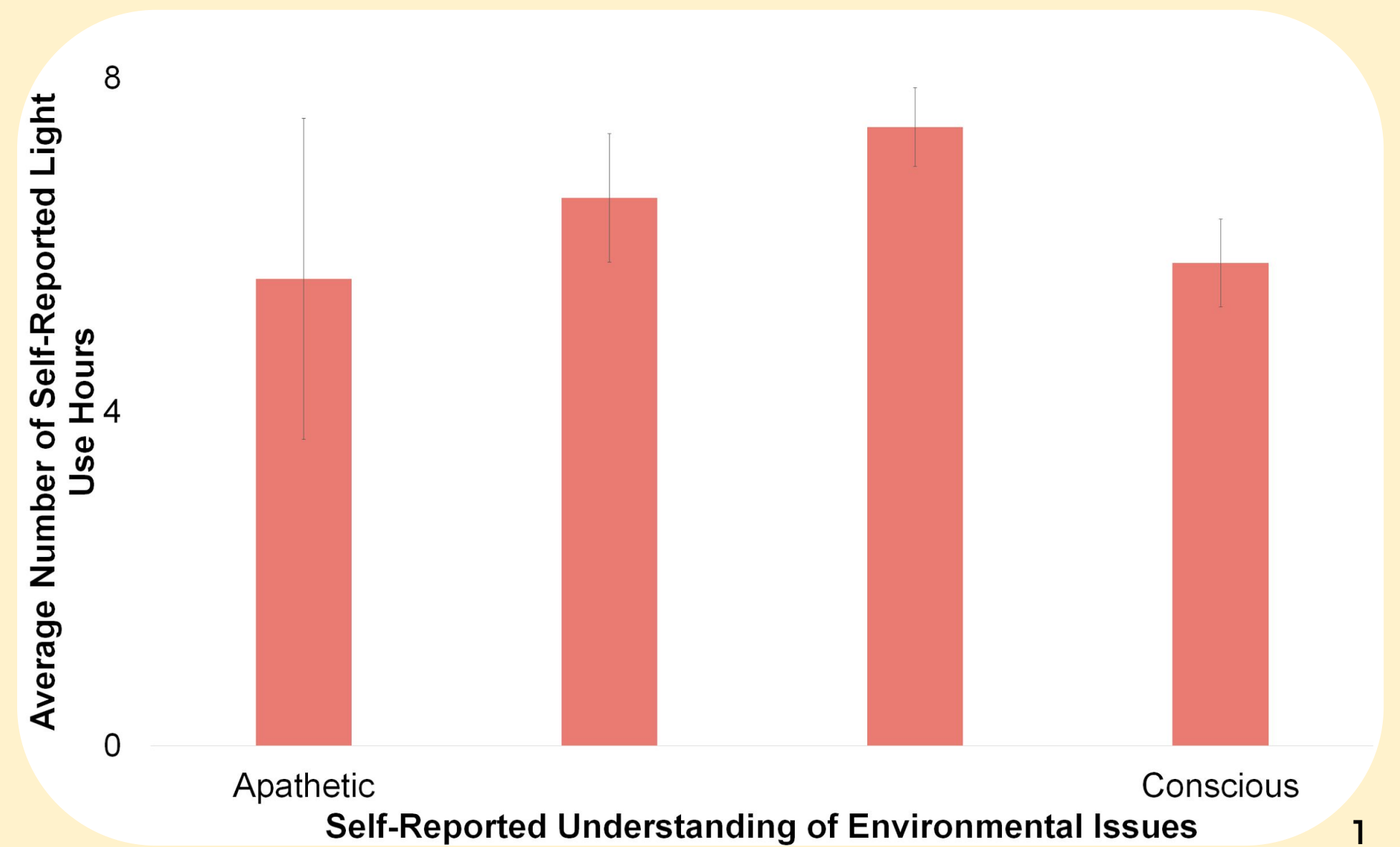


Water fountains in Lafayette residential halls are inconsistently distributed,² and insufficient compared to Marist College.³ More and broader access could encourage more sustainable practices.



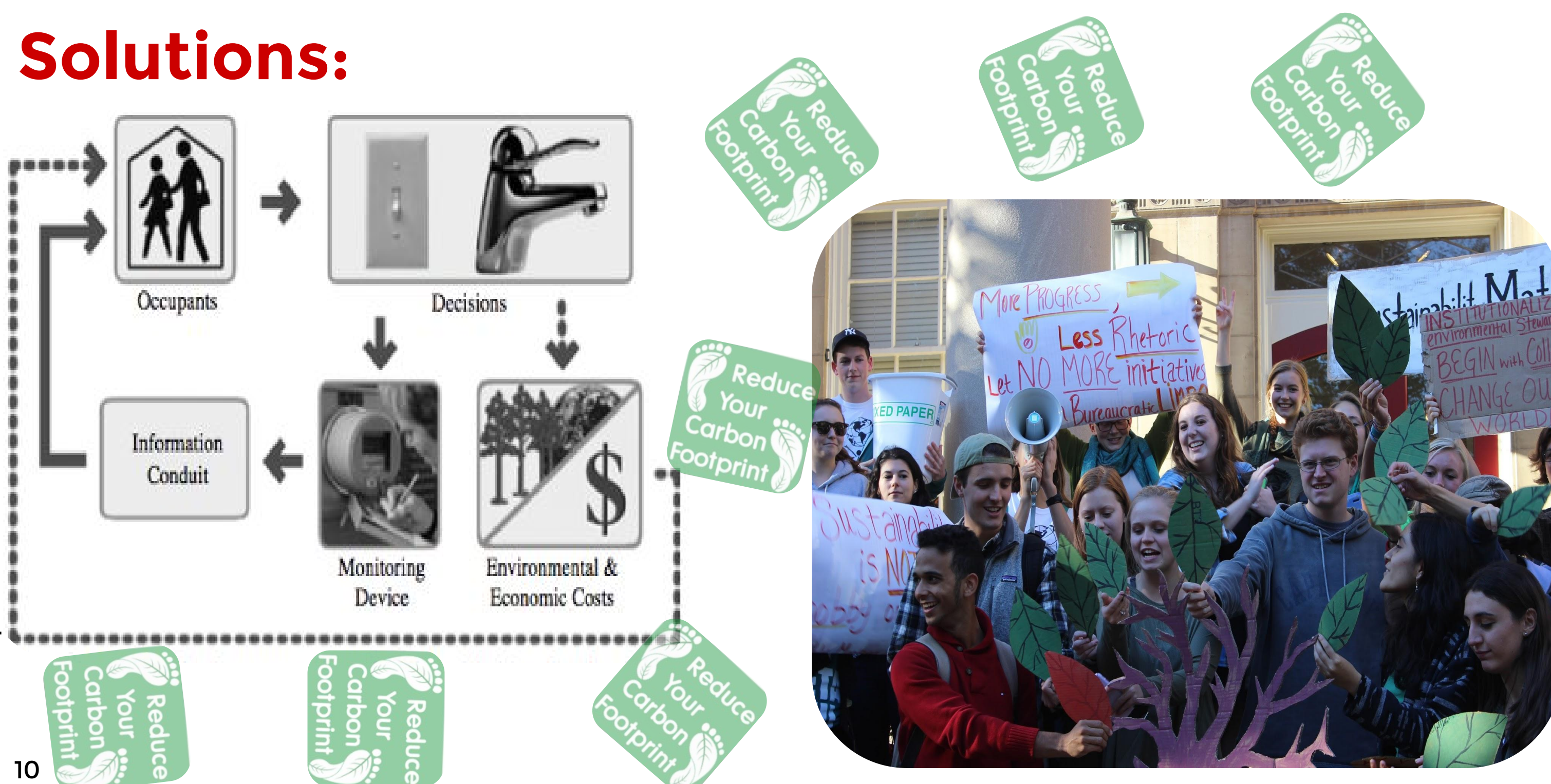
Lighting Use

The Problem: There is inconsistency between students' self-reported environmentally conscious attitudes and their unsustainable behaviors.



Lafayette students' knowledge of environmental issues has no effect on light use and energy waste,¹ but paying **your own** electric bill could impact individual habits.¹ Alternate solutions should be explored.

Solutions:



Overt direct feedback on water and lighting use patterns may contribute to students' knowledge base and shift behaviors to reflect economic and environmental costs.⁴ Additionally, investment in programs, forums, and websites will facilitate broader communication on campus sustainability.^{5,6}